

HAFFKINE BIO PHARMACEUTICAL CORPORATION LIMITED
Procurement Cell

(A Government of Maharashtra Undertaking)

Regd. Office : Acharya Donde Marg, Parel, Mumbai 400 012 (INDIA)

Phone No: 022- 24129320-23

Managing Director :022-24150628

General Manager (Procurement Cell) :022-24100478

Website : http://www.vaccinehaffkine.com

E-mail: procurementcell@vaccinehaffkine.com

प्रशासकीय मान्यता निधी १२,३६,१०,०००/-
जिल्हा वार्षिक योजना २०१९-२०

No.: **6156** /Haffkine/Procurement Cell/E-2720/128 Slice Ct Scanner With Buyback Of End Of Support Ct Scanner In The Department With Turnkey And Air Conditioning And Connectivity With The Existing Departmental Pacs/2021-22.

Date: 12/01/2022

To,

M/s. Siemens Healthcare Pvt. Ltd.

9th Floor, North Wing,

Godrej One, Pirojshah Nagar,

Vikhroli East, Mumbai 400079.

E-Mail: chirag.sakpal@siemens-healthineers.com

Bidmanagementteam.func@siemens-healthineers.com

Subject : Supply Order for Tender No. E-2720/128 Slice Ct Scanner With Buyback Of End Of Support Ct Scanner In The Department With Turnkey And Air Conditioning And Connectivity With The Existing Departmental Pacs.

Reference: 1. Tender No. E-2720/HBPCL/PC/128 Slice Ct Scanner With Buyback Of End Of Support Ct Scanner In The Department With Turnkey And Air Conditioning And Connectivity With The Existing Departmental Pacs/2020-21.
2. शा.नि.क्र. : जेएचएम-२०१९/प्र.क्र.२५४/प्रशा-१ दि. ०५ ऑक्टोबर, २०२१.
3. Sanction of Tender Approval Committee Meeting No. 136 Dated 30.12.2021.

With reference to the tender cited under reference no 1, you are requested to supply the following goods as per details mentioned below to consignee list enclosed with this order.

Sr. No.	Name of the item	Specification of item	Quantity/ Unit (DMER)	Unit Rate inclusive of GST(Rs.)	Total Amount Rs.
1.	128 Slice Ct Scanner With Buyback Of End Of Support Ct Scanner In The Department With Turnkey And Air Conditioning And Connectivity With The Existing Departmental Pacs Make & Model : SIEMENS HEALTHINEERS-SOMATOM Definition Edge	As per Annexure X	01	12,16,10,000/-	12,16,10,000/-

Total amount in words: Rupees Twelve Crore Sixteen Lakhs Ten Thousand Only.

Factory Location: Siemens Healthcare GmbH Henkestr. 127 D-91052, ERLANGEN GERMANY.

1 **Forwarding:** Forwarding Free on Road Destination. I.e. door delivery basis.

- 2 **Delivery Period:** 12 weeks from the date of receipt of order by the supplier to the consignee attached.
- 3 **Pre-Dispatch Inspection:** Supplier shall make necessary arrangement / facilitate to carry out Pre-Dispatch inspection as per Tender Terms & condition and submit the Inspection report to this office. The Pre-Dispatch inspection cost will be borne by supplier. Machine should be dispatched only after satisfactory Pre-Dispatch Inspection.
- 4 **Risk purchase clause:** If the bidder fails to supply the stores within the stipulated delivery period, the order will stand cancelled. Undersigned shall be entitled to purchase such stores from any other source at such price which ordinarily should not be more than 10% of the tender price. The extra expenditure in such cases shall be recovered by Managing Director, Haffkine Bio Pharmaceutical Corporation Ltd. (Procurement Cell), Mumbai from the Supplier.
- 5 **Payment Terms:** Payment of 80% of the contract value will be made after delivery of the material at site & on receipt of acceptance certificate and 20% after successful installation and satisfactory commissioning and operation of the machinery.
- 6 **Acceptance & Receipt:** It should be submitted in Appropriate Format to the purchasing authority.
- 7 **Delivery Challan** - Should be sent in the name of consignee in duplicate. It should specify Name of Equipment / Mfg. by / packing & quantity.
- 8 **Invoice Copy** - Should be sent in triplicate on the Name of Managing Director, Haffkine Bio Pharmaceutical Corporation Ltd (Procurement Cell), Mumbai. Along with Bill of Entry and Country of Origin Certificate of the consignment.
- 9 **Other Terms :**
 - 1) **Warranty:** The warranty period shall be for 5 years from the date of commissioning of all equipment supplied as certified by the consignee. After completion of 5 years warranty period Manufacturer/Supplier should give commitment to ensure services and supply of spare part for further 5 years. The successful tenderer must ensure 95% uptime during warranty period. In case of downtime, warranty period will be extended for period of downtime. If the equipment is not attended within 24 hours for Mumbai and 48 hours for other places the supplier will be liable to pay a penalty of 0.07% of purchase cost for every day of delay. Such penalty will be recovered from the amount of security deposit. Certificate of such uptime / downtime issued by the end user will be binding for the supplier Replacement of spares parts thereof due to manufacturing defects during warranty period will be entirely at the supplier's cost.
 - 2) The user institution will enter to the Comprehensive Maintenance Contract with supplier agency @ 5% of the order value (excluding taxes) of the equipment per year for 5 years after completion of warranty period. In case of non-compliance of CMC the supplier will be liable to pay penalty or for appropriate action. Payment of CMC on yearly basis will be made by the user's institution, at the end of the year after satisfactory performance report from the end user.
- 10 **Contract Agreement:** Bidder should submit a tripartite (Importer, Manufacturer and Haffkine Bio Pharmaceutical Corporation Ltd.) Contract Agreement on non-judicial stamp paper of requisite value.

Fall Clause

It is a condition of the contract that all through the currency thereof, the price at which you will the supply stores should not exceed the lowest price charged by you to any customer during the currency of the contract and that in the event of the prices going down below the rate contract prices you shall promptly furnish such information to us to enable to amend the contract rates for subsequent supplies.

- 11 The Bidder should submit (within 7 days) amount of 1.5% i.e. **Rs. 18,24,150/-** of order value to meet other incidental expenditure and 3% i.e. **Rs. 38,48,300/-** as Security Deposit in form of Bank Guarantee. The Bank Guarantee valid for 2 months after the expiry of date of warranty issued by any Nationalized / Scheduled Bank.

Amount to be deposited to Following Account:

Name of Account	Haffkine B P C L (Procurement Cell), CESS Account
Name of the Bank & Branch	Bank of Maharashtra, Branch- Mumbai Parel
Account No.	60381379835
IFSC Code	MAHB0000079

Consignee: As per list enclosed

या. व्यवस्थापकीय संचालक यांच्या मान्यतेने व करिता



Smt. Sushama Patil

General Manager

**Haffkine Bio Pharmaceutical Corporation Ltd.
(Procurement Cell), Mumbai.**

Copy to:

- 1) Commissioner Health Services, Mumbai.
- 2) Director, Medical Education & Research, Mumbai-400 001.
- 3) Account Manager, Haffkine Bio Pharmaceutical Corporation Ltd. (Procurement Cell), Mumbai.
- 4) Office File.

Copy to Consignee: Dean, Sir. J. J. Group of Hospital, Mumbai.: As per Tender Condition No.17 The user Institution should get the Comprehensive Maintenance Contract done with supplier agency @ 5% of the Order value (excluding taxes) of equipment per year for Eight years after Completion of warranty period.

Copy Submitted to: 1) Secretary, Medical Education & Drug Department, Mantralaya, Mumbai.

Annexure-X

Name of the Item: 128 Slice Ct Scanner With Buyback Of End Of Support Ct Scanner In The Department With Turnkey And Air Conditioning And Connectivity With The Existing Departmental Pacs		
Old 64slice CT scanner should be removed from the site prior to installation of the new machine (BUYBACK).		
THE SYSTEM SHOULD HAVE 64 ROWS OF DETECTOR WITH 128SLICE ACQUISITION/GENERATION PER ROTATION. THE MODEL SHOULD HAVE AERB TYPE APPROVAL AND SHOULD BE US FDA AND EUROPEAN CE CERTIFIED		
	FEATURES	SPECIFICATIONS
1 GANTRY		
1.1	Aperture	≥ 70 cm
1.2	Scan field	≥ 50 cm
1.3	Gantry Tilt	Minimum tilt of 20 degree on either side.
1.4	Integrated display panel	Gantry front showing current scan parameters such as kV, mA etc.
1.5	Positioning	3 D laser light or better
2. SINGLE SOURCE DUAL ENERGY – license should be floating to be used on console and workstation or only on workstation.		
2.2.	Dual energy packages (to be offered)	The system should have dual energy acquisition including contrast-based studies to evaluate Lung Nodules, Lung Vessels, Angiograms of the neck and limbs, Hemorrhage , Virtual Non-Contrast studies of the Liver, Kidneys. Fat map calculation in the liver and iodine quantification in other liver lesions. Dual energy lung nodule analysis should also be given.
2.2.1.	Virtual NCCT—Brain hemorrhage	Differentiation of brain hemorrhage from contrast enhancement. Differentiation of active from old bleeds
2.2.2.	Mono energetic imaging	Mono energetic Imaging for beam hardening artifact elimination, Contrast augmentation and tissue visualization with Mono energetic image with facility for removal of artifacts from clips, coils, orthopedics/dental implants etc. Mono energetic imaging in contrast enhanced studies and displaying multiple mono energetic ROIs can be incorporated.
2.2.3	Material density data	Electron Density and Atomic number visualization and processing.
2.2.4	Gout Imaging	Color coded visualization of deposited uric acid crystals in peripheral extremities.
2.2.5	Calculi Characterization	Visualization of the chemical composition of kidney stones.
2.2.6	Lung Analysis	Lung isolation, Color coding of affected vessels, Iodine uptake quantification. Lung nodule analysis using iodine mapping
2.2.7	Direct Neuro CTA	Neuro CTA with accurate bone removal in complex

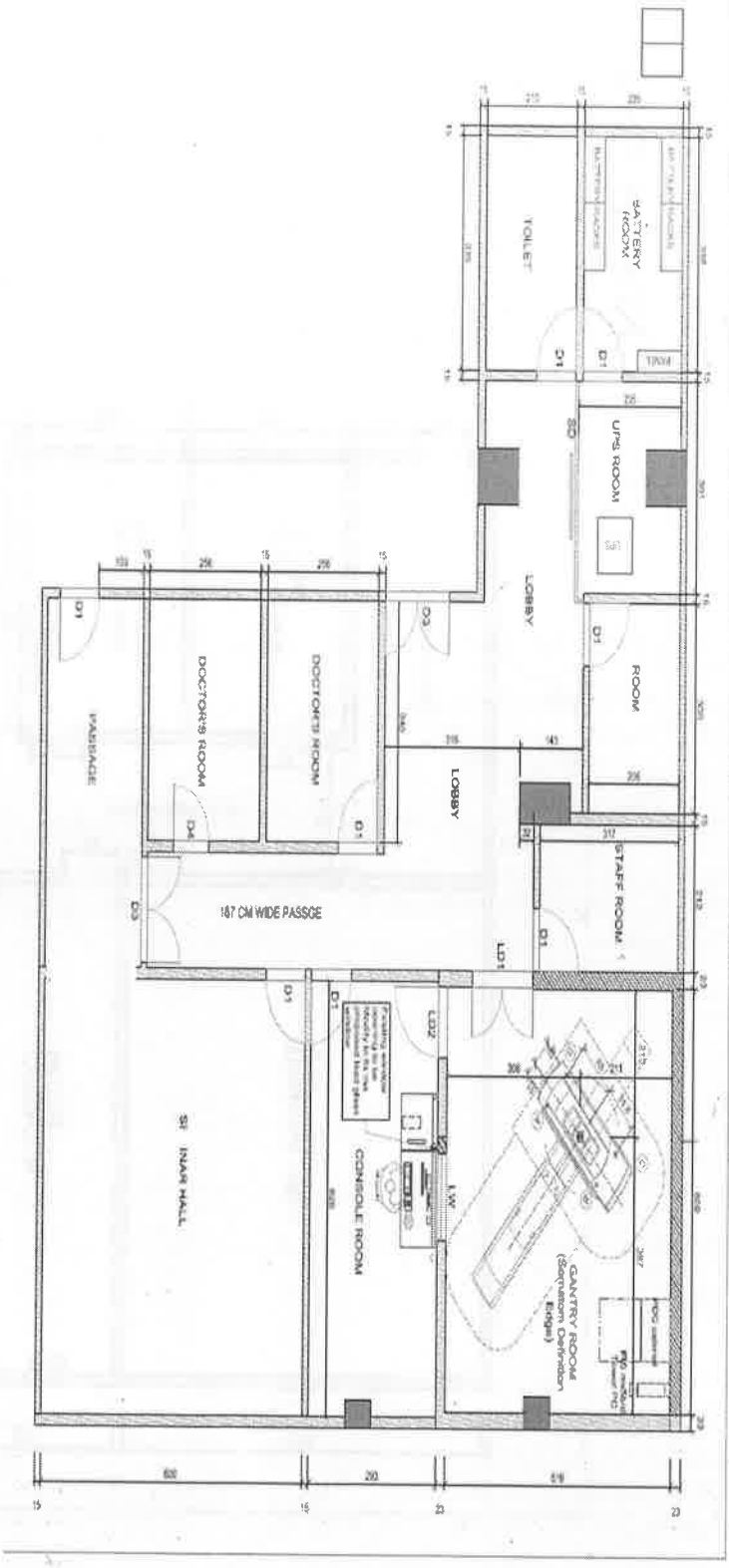
		body regions using dual energy method. Similar functions should also be available for peripheral angiograms along with neuro CTA.
2.2.8	Contrast vs Blood differentiation	Virtual non-contrast CT scan using dual energy method.
2.2.9	Vascular Plaque characterization	Vascular Plaque characterization using dual energy method. <u>Endoleak assessment.</u>
2.2.10	Marrow edema imaging	Dual energy marrow imaging by calcium subtraction to see for marrow pathologies.
2.2.11		All other dual energy applications should be quoted as standard.
3. XRAY GENERATOR		
3.1.	Output capacity (actual and not effective)	≥ 100 kW or more
3.2.	mA range	20-800mA or more , incremental sets of 10ma
3.3.	kV	80- 140 kVp
3.4	Low KVp imaging	Specific best available
4. TUBE ASSEMBLY		
4.1.	Tube Voltage	80-140 kV or more
4.2.	Tube current range	800mA or more
4.3.	Anode heat storage capacity	≥8MHU
4.4.	Anode heat dissipation rate	≥ 1 MHU per minute
4.5.	Focal spot	1.0 X 1.0 cm or less
5. PATIENT TABLE		
5.1.	Maximum load capacity	≥ 200 kg
5.2.	Scannable range	≥ 2000 mm
5.3.	Longitudinal table speed	≥ 100 mm per sec
6. SCANNING MODES		
6.1.	Spiral scanning	
6.1.1.	Spiral exposure	At least 60 sec or more
6.1.2.	Scan time for full 360 degree rotation	≤ 0.35 sec
6.1.3.	Bolus triggered/ bolus chase spiral acquisition	The system should be integrated with injector for auto trigger (care contrast/Xtream injector/ Injector Synchronization / Sync Right equivalent)
6.1.4	Pitch	0.5-1.5.mention availability with respiratory gating and cardiac scanning also.
6.1.5	Image reconstruction time	To be mentioned
6.2.	Axial Scanning	
6.2.1.	Slice Thickness (Axial mode)	0.625 – 5 mm variable
6.2.2.	Dynamic Multiscan	It must be possible to do dynamic multiscan for any body part
7. DATA ACQUISITION SYSTEM –LATEST DETECTOR CONFIGURATION- should generate 128 slice per 360 degree rotation		
7.1.	Detector coverage width	38 mm or more at 1:1 pitch
7.2.	Number of acquired slices per rotation	Minimum 128 slices
7.3.	Number of detector rows or elements	Minimum 64 rows

7.4.	Whole brain perfusion	The system should do whole brain CT perfusion with coverage of not less than 8 cm.
7.5	Dynamic CTA	Enabling 4D CT DSA, time resolved perfusion with a minimum range of 14 cm.
7.6	2D intervention scan mode	2D intervention for biopsy needle planning
8. PATIENT COMMUNICATION		
8.1.	Integrated patient intercom	There should be integrated patient intercom
8.2.	Automatic patient instruction	A standard set of commands for patient communication before, during, and after scanning should be available in the English and Hindi language
9. PATIENT REGISTRATION		
9.1.	Pre-registration	It should be possible to do pre-registration of patient at any time prior to scans
9.2.	Emergency registration	Special emergency registration should be possible
9.3.	HIS& RIS integration	It must transfer patient information from departmental existing HIS & RIS via DICOM Get Work list
9.4.	PACS/HIS/RIS	It must transfer examination information from scanner into departmental HIS & RIS via MPPS
10. OPERATOR CONSOLE WITH TABLE		
Computer System & image processor		
10.1.	CPU Processor	Minimum quad core processor, 292 GB hard disc, 8 GB RAM. The best available option to be quoted by the vendor
10.2.	Display	One large minimum 18" high resolution LCD monitors with a display on 1,024 X 1,024 or more
10.3.	Software	Should perform the functions like scanning image reconstruction, film documentation, MPR, CT angiography, MIP, 3D VRT, 3D SSD, Fly through, readymade perfusion for stroke imaging
10.4.	CT Angiography and Automated bone removal	Protocols to do CT angiography of anybody region and accurate presentation of subtracted CTA data sets
11. IMAGE POST PROCESSING		
11.1.	Architecture	A Client Server Architecture based solution which should be integrated with the existing PACS server. (Intellispace portal/ AW Server/SyngoVia etc)
11.1.1.	Minimum number of slices	Software must support minimum 20,000 slices with data pre-processing
11.1.2.	User licensing scheme	As defined for each application
11.1.3.	Integration	Imaging processing server must be integrated with RIS-PACS in the department
11.2.	Server Hardware	
11.2.1.		Dell/HP/IBM dual CPU; RAM- 96 GB minimum; Data Disc: RAID level 5; Graphical processing unit: NVIDIA GPU or equivalent; Image storage minimum 1 TB Following to be added to this point Agreed that all the vendor have their different

18	Providing and making Siemens make Emergency Stop with wiring in 1.5 Sqmm Polycab flexible Copper Wires with necessary conduit accessories ect complete.	No.	1
19	Providing and making Siemens make On/Off Switch with wiring in 1.5 Sqmm Polycab flexible Copper Wires with necessary conduit accessories ect complete.	No.	1
20	Providing and fixing radiation on lamp with wiring 1.5 sqmm polycab copper wires	No.	1
21	Supplying, erecting, testing and commissioning the 4 zones Microprocessor based conventional fire alram control panel (FACP) with necessary test certificate from ERTL provided with SMPS of suitable battery (2 x 12 v) 24v, 24 AH capacity maintainance free battery as standby supply to switch over automatically for period of 8 hours in case of A.C. supply failure to panel with 7AH capacity battery charger. Panel shall have following features.	No.	1
√	Visual zone indication in which fire has emerged.		
√	Audio alram device.		
√	Acknowledge reset and test devices.		
√	Visual indication (2 x 20 character LCD x display incorporating following indications)		
√	Fire conduction		
√	Fault condition		
√	A.C. Pilot indication		
√	Low battery indication		
√	Blown fuse indication. A.C. as well as D.C.		
√	Built in electronic hooters of 2 tone round for fire condition and single tone for fault condition.		
√	Open and short circuit fault		
√	Push button switch for checking each zone.		
√	Push button to disable audio alram.		
√	Reset push button.		
√	Fire protection and alram circuit shall have modular design using electronic plus in type PCB with spare cards.		
√	Supply and fixing smoke detector below false ceiling.	Nos.	10
√	Supplying & laying 3 core X 2.5 sq.mm. copper wire through 20 mm PVC Conduit in concealed manner to connect the Smoke and Fire detectors.	Mtr.	50
22	Supply and installation of main LT panel, wall mounted front operated totally enclosed vermin proof, indoor non-draw out-cubicle type power panel fabricated out of 2mm the CRCA sheet having gas keted hinged cover on each cubicle fully powder coated / enamel painted after seven tank treatment, incorporating horizontal and vertical sleeved copper busbars'complete with all internal wiring danger board, two earthing lugs, cable chamber etc. asreqd.'housing below mentioned switchgears / meters. (GA drawing of the panel to be got approved from the Consultant	Nos	1
23	Supply and installation of main LT panel, wall mounted front operated totally enclosed vermin proof, indoor non-draw out-cubicle type power panel fabricated out of 2mm the CRCA sheet having gas keted hinged cover on each cubicle fully powder coated / enamel painted after seven tank treatment, incorporating horizontal and vertical sleeved copper busbars'complete with all internal wiring danger	Nos.	1

	board, two earthing lugs, cable chamber etc. as reqd. housing below mentioned switchgears / meters. (GA drawing of the panel to be got approved from the Consultant)		
24	Supply & fixing Fire extinguisher 5kg	Nos	5
25	Providing & fixing of 6 way ETPN Distribution board with acrylic double door, IP 43 protection similar to Legrand Cat. No. 6077 16 complete in concealed manner.	NOS.	3
26	Providing & fixing of 6 to 32 amps. SP MCB similar to Legrand Cat. No. 603231 to 603237 in the existing Distribution Board (Single Pole).	NOS.	30
27	Providing & fixing of 40 / 63 amps. FP MCB similar to Legrand Cat. No. 6033 23 & 6033 25 in the existing Distribution Board.	NOS.	3
28	Providing and laying U1 size uninyvin cable from mains panel to the UPS and back from UPS to the mains panel	RM	60
29	Providing and laying U1 size Uninyvin cable from electrical panel to Cabinet.	RM	150
30	Providing and laying U1 size Uninyvin cable Cabinet to Gantry.	RM	25
D	HVAC WORK		
	Supply, fixing of split type AC system with copper piping, Refrigeration gas, drain piping, outdoor unit Etc complete all necessary for successful supply installation testing commissioning of Ac units (for console room & other rooms)		
	Ductable unit		
	8.5 TR ductable unit	No	2
	5.5TR Ductable	No	1
	Canvas connection	No	1
	Refregent Gas	Kg	30
	Ducting 22 guage GI	Sqm	25
	Thermal insulation Nitrile rubber	Sqm	28
	Copper pipe	Rmt	35
	Drain pipe	Rmt	35
	Installation	No	3
	Outdoor stand	No	3
	Electric cable	Rmt	50
	Split AC		
	2TR split AC	No	2
	1.5 TR Split Ac	No	2
	Referegent Gas	Kg	20
	Installation	No	11
	Copper pipe	Rmt	155
	Drain pipe	Rmt	155
	Electric cable	Rmt	150
	Outdoor stand	No	3
	Providing and fixing dehumidifier	No	1

SCALE: 1:50

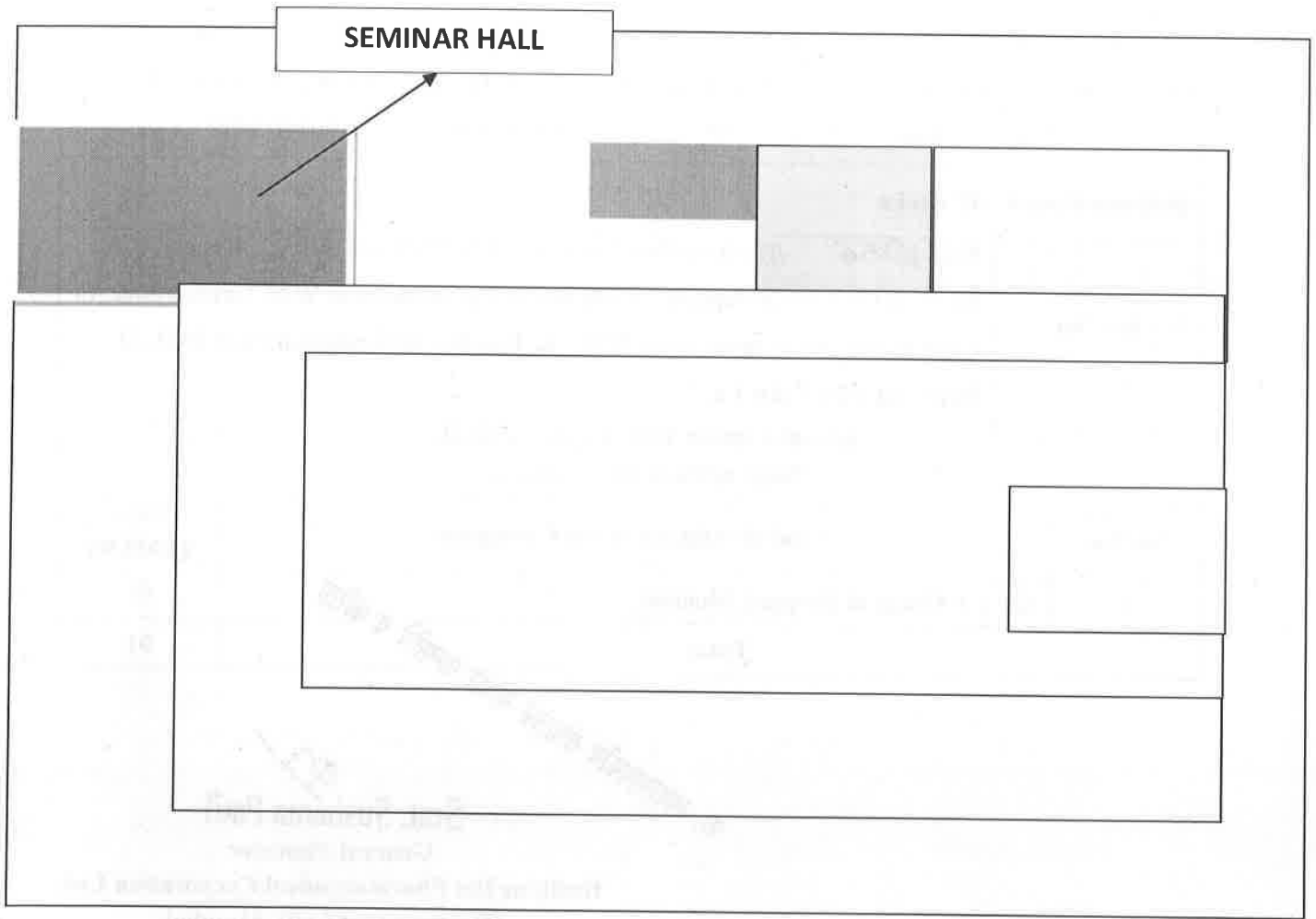


PROPOSED PLAN

NO.	DESCRIPTION	AREA (SQ. METERS)	REMARKS
01	PROPOSED 20 CM BRICK WALL	1500 X 2100 MM	EXISTING BRICK WALL
02	PROPOSED 20 CM BRICK WALL	1500 X 2100 MM	PROPOSED 20 CM BRICK WALL
03	PROPOSED 20 CM BRICK WALL	1500 X 2100 MM	PROPOSED 20 CM BRICK WALL
04	PROPOSED WOODEN PARTITION	1500 X 2100 MM	PROPOSED WOODEN PARTITION

LEGEND	DESCRIPTION
[Solid Line]	EXISTING BRICK WALL
[Dashed Line]	PROPOSED 20 CM BRICK WALL
[Hatched Area]	PROPOSED 20 CM BRICK WALL
[Dotted Area]	PROPOSED WOODEN PARTITION

Tentative plane of the seminar hall in X Ray Department



Consignee Details

M/s. Siemens Healthcare Pvt. Ltd.		
128 Slice Ct Scanner With Buyback Of End Of Support Ct Scanner In The Department With Turnkey And Air Conditioning And Connectivity With The Existing Departmental Pacs		
Make & Model : SIEMENS HEALTHINEERS-SOMATOM Definition Edge		
Delivery Period	12 weeks	
PO Ref. No.	No.: 6156 /Haffkine/Procurement Cell/E-2720/128 Slice Ct Scanner With Buyback Of End Of Support Ct Scanner In The Department With Turnkey And Air Conditioning And Connectivity With The Existing Departmental Pacs/ 2021-22. Date: 12/01/2022	
प्रशासकीय मान्यता निधी १२,३६,१०,०००/- जिल्हा वार्षिक योजना २०१९-२०		
Sr. No.	Name & Address of the Consignee	Oty. (DMER)
1.	Sir. J. J. Group of Hospital, Mumbai.	01
Total :		01

या. व्यवस्थापकीय संचालक यांच्या मान्यतेने व कृपेने

Smt. Sushama Patil

General Manager

Haffkine Bio Pharmaceutical Corporation Ltd.
(Procurement Cell), Mumbai.